

Making Your Mark

Exhibition of surface decoration on glass by
Christopher Ainslie
Peter Furlonger
Jirí Harcuba
Charmian Mocatta



February 2 - 24, 2007

Open days: February 2 - 3, 11:00 - 18:00

Thereafter by appointment only

Dan Klein Associates
Specialists in contemporary glass

43 Hugh Street . London SW1V 1QJ . Telephone: 020 7821 6040 . Fax: 020 7834 3480 . Email: alanjpoole@aol.com

Chris Ainslie

Chris Ainslie came to glass engraving from a background studying and working with tapestry, wood engraving, graphic design, lettering, and stained glass. He was elected a Fellow of the Guild of Glass Engravers in 1996. The cased glass vessels on which he works, using flexible drive engraving tools and sandblasting, are blown by others. His iconography on glass, which often includes the extensive use of lettering, is usually set in the English countryside with bucolic scenes and buxom country folk among trees and birds. For this exhibition, however, he has (by special request) made his subject London Life. 'My influences have been the early Italian painters, the English figure painter Stanley Spencer and Dutch 18th century wheel engravers'.

Dan Klein Associates
Specialists in contemporary glass

Chris Ainslie



Chris Ainslie - 'Park Beat – Hyde Park' 2006

(Glass Blown by Neil Wilkin)

Large deep cylinder bowl

Double overlay, lilac over pink , sandblasted then engraved with sintered diamonds

Ø15cm, 24cm high

£2800

Dan Klein Associates
Specialists in contemporary glass

Chris Ainslie



Chris Ainslie 'Zoo Safari – Regent's Park Zoo' 2007

(Glass blown by Neil Wilkin)

Large Deep cylinder bowl

Double overlay, green over pale yellow, sandblasted then engraved with sintered diamonds

Ø14.5cm, 21.5cm high

Sold

Dan Klein Associates

Specialists in contemporary glass

Chris Ainslie



Chris Ainslie 'Night Ladies – Soho' 2006
Dark blue overlay panel, enamelled, sandblasted then engraved
With sintered diamonds, metal side supports, cast stone base
25 x 25cm.
£1500

Dan Klein Associates
Specialists in contemporary glass

Chris Ainslie



Chris Ainslie 'Boat Social – Thames' 2006
Dark Green overlay panel, enamelled, sandblasted then engraved
With sintered diamonds, metal side supports, cast stone base
25 x 25cm.
£1500

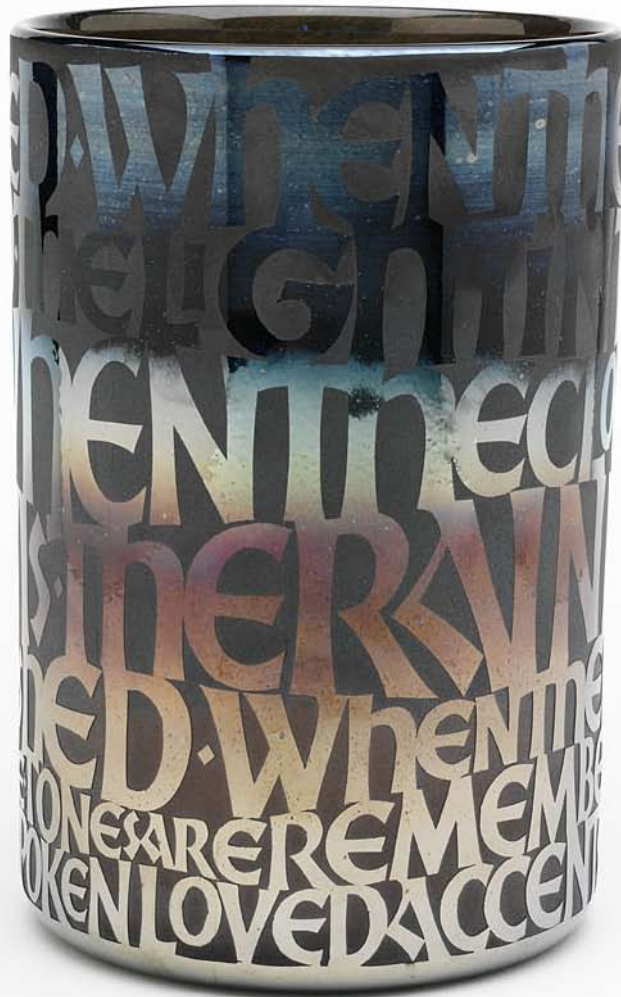
Dan Klein Associates
Specialists in contemporary glass

Peter Furlonger

Imagery, lettering and words play equally important roles in the work of Peter Furlonger. His way of working is to cover his glass forms with self-adhesive plastic. The design is then hand-cut through this and deeply sandblasted on to the glass. He often works on both sides of the glass with the intermingling of letters and imagery at different levels adding a kinetic effect. The cased glass forms he uses are blown to his requirements. Texts chosen are emotive and often make reference to light. Peter Furlonger often works on special commissions which he enjoys as a challenge, treating them as 'points of departure for new discoveries'.

Dan Klein Associates
Specialists in contemporary glass

Peter Furlonger



Peter Furlonger - 'Broken Lights' 2006 (words by Percy Bysshe Shelley)
(Glass blown by Andy Potter)
Blue/green metallic overlay, oxidised and apricot cased, sandblasted lettering
Ø16, 24cm. high
Sold

Dan Klein Associates
Specialists in contemporary glass

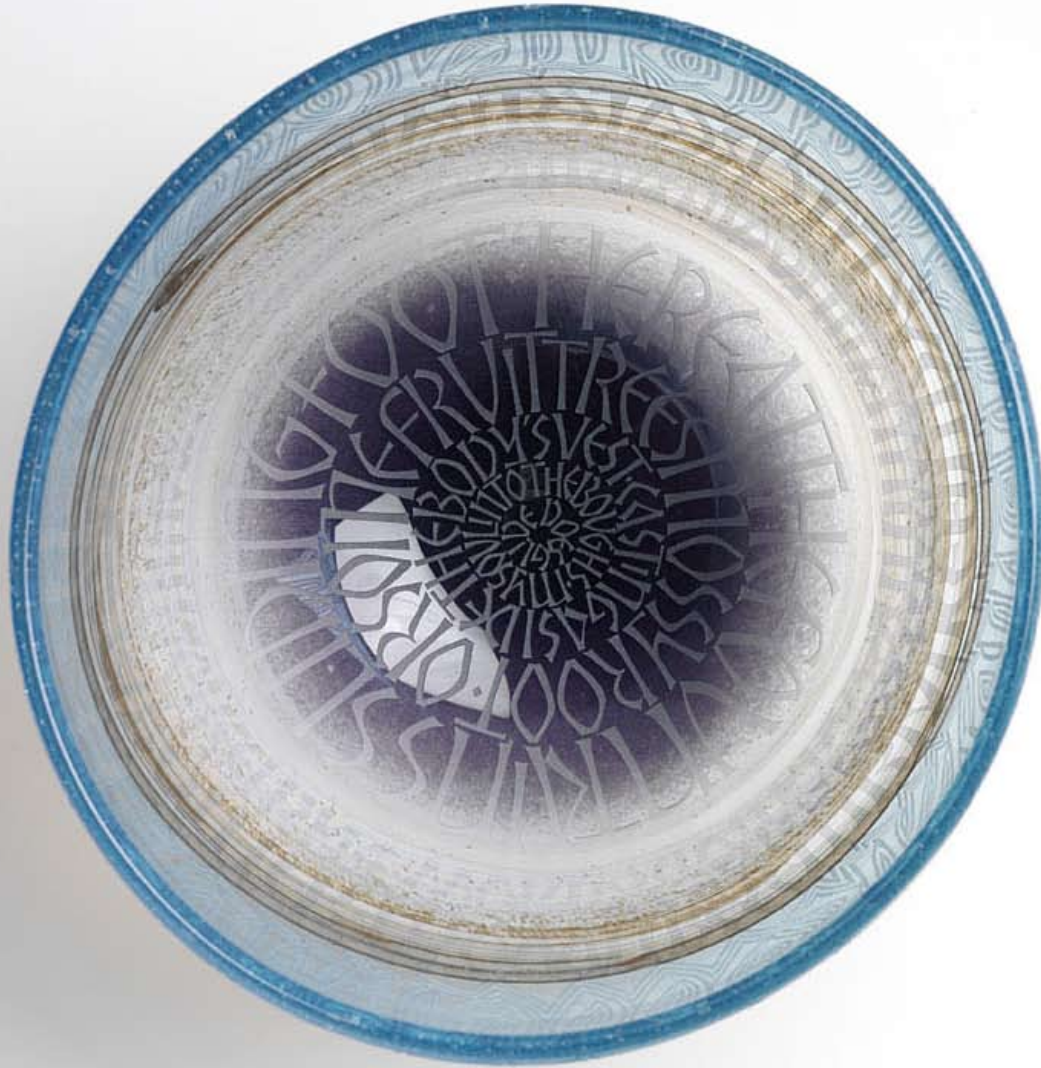
Peter Furlonger



Peter Furlonger - 'An Inward Light' 2006 (words by William Wordsworth)
(Glass blown by Jill Ellinworth)
Blue metallic overlay, apricot cased, sandblasted lettering
Ø10cm, 31cm high
Sold

Dan Klein Associates
Specialists in contemporary glass

Peter Furlonger



Peter Furlonger - 'The Mind, that ocean' 2006 (words by Andrew Marvell)
(Glass by Sraja: Lithuanian Studio Glass)
Through coloured in turquoise, brown and purple, sandblasted lettering
Ø29.5cm, 22cm high
£1800

Dan Klein Associates
Specialists in contemporary glass

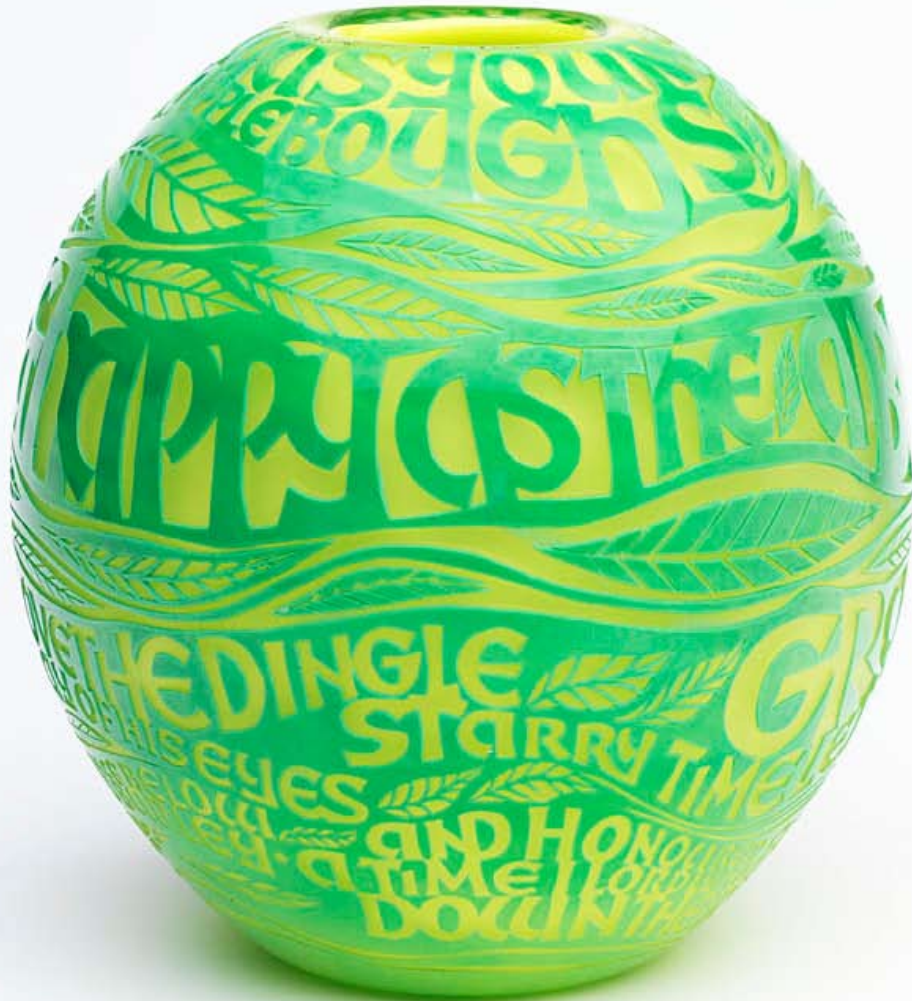
Peter Furlonger



Peter Furlonger - Dragon Fish Bowl, 2006
(Glass by Jill Ellsworth)
Green metallic overlay, turquoise cased, with white and purple inclusions, sandblasted
22 x 22cm.
£1800

Dan Klein Associates
Specialists in contemporary glass

Peter Furlonger



Peter Furlonger - 'The Rivers of the windfall light' 2007 (words by Dylan Thomas)
Green overlay, yellow cased, sandblasted lettering
(Glass by Colin Brown)
18 x 18cm.
Sold

Dan Klein Associates
Specialists in contemporary glass

Peter Furlonger



Peter Furlonger - 'The end is where we start from' 2006 (words by T.S.Eliot)
Clear glass footed bowl, Sandblasted lettering
Ø30cm, 19cm high
Sold

Dan Klein Associates
Specialists in contemporary glass

Peter Furlonger



Peter Furlonger - 'Fireball' 2006 (words by Shakespeare)
(Glass blown by Colin Brown)
Black overlay, red cased, sandblasted lettering
Ø14cm, 16cm high
Sold

Dan Klein Associates
Specialists in contemporary glass

Peter Furlonger



Peter Furlonger - 'Attic' 2006 (words by Shakespeare)
(Glass blown by Jill Ellinsworth)
Black overlay, apricot cased inner, sandblasted lettering
Ø17cm, 14cm high
Sold

Dan Klein Associates
Specialists in contemporary glass

Jirí Hrcuba

Jirí Hrcuba was born in 1928 in the glass-making area of Harrachov in Czechoslovakia and glass has always been at the centre of his life. His famous intaglio engraved portraiture first started to appear in the 1970s. Despite its often impressionistic quality, his work is utterly precise, immensely expressive. He uses engraving and cutting tools in tandem in a highly personal technique, almost as if they were paintbrushes providing flesh tones. Every cut, every mark on the glass has emotional force. His achievements place him in the pantheon of the world's finest engravers including Dominik Biemann, a fellow country man and one of his heroes. Hrcuba has exhibited his work over many years and it is to be found in most major museum collections of glass art worldwide.

Dan Klein Associates
Specialists in contemporary glass

MAKING YOUR MARK

Jirí Harcuba



Jirí Harcuba - 'Edith Sitwell I' 2006
Intaglio wheel engraved portrait on demi lune clear glass form
20 x 12cm.
£550

Dan Klein Associates
Specialists in contemporary glass

MAKING YOUR MARK

Jirí Harcuba



Jirí Harcuba - 'Edith Sitwell II' 2006
Intaglio wheel engraved portrait on oval clear glass segment
14 x 14.5 cm.
£550

Dan Klein Associates
Specialists in contemporary glass

MAKING YOUR MARK

Jirí Hrcuba



Jirí Hrcuba - 'Iris Murdoch I' 2006
Intaglio wheel engraved portrait on circular clear glass plaque
Ø20cm
£550

Dan Klein Associates
Specialists in contemporary glass

MAKING YOUR MARK

Jirí Harcuba

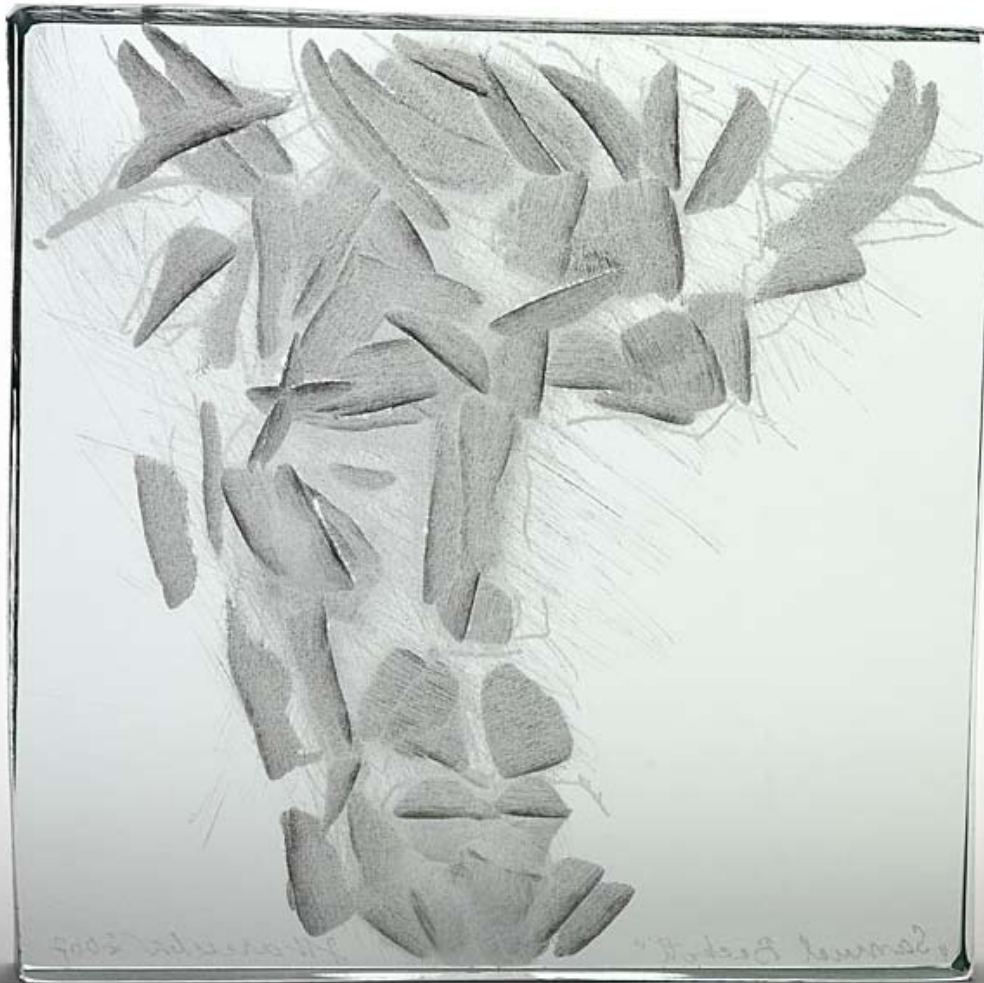


Jirí Harcuba - 'Virginia Woolf' 2006
Intaglio wheel engraved portrait on optical glass prism, the back with green staining
10 x 10 cm
£550

Dan Klein Associates
Specialists in contemporary glass

MAKING YOUR MARK

Jirí Harcuba



Jirí Harcuba - 'Samuel Beckett I' 2006
Intaglio wheel engraved portrait on square plate glass tile
15 x 15cm
Sold

Dan Klein Associates
Specialists in contemporary glass

MAKING YOUR MARK

Jirí Harcuba



Jirí Harcuba - 'Samuel Beckett II' 2006

Wheel engraved portrait on cased glass cushion shaped disc, dark red over black

Ø24cm

£800

Dan Klein Associates
Specialists in contemporary glass

MAKING YOUR MARK

Jirí Harcuba



Jirí Harcuba - 'Violet Gordon Woodhouse' 1998
Intaglio wheel engraved portrait on square optical glass block
11.5 x 11.5 x 3.5cm
Sold

Dan Klein Associates
Specialists in contemporary glass

MAKING YOUR MARK

Jirí Harcuba



Jirí Harcuba - 'George Orwell' 2006
Intaglio wheel engraved portrait
Ø16.5cm
£550

Dan Klein Associates
Specialists in contemporary glass

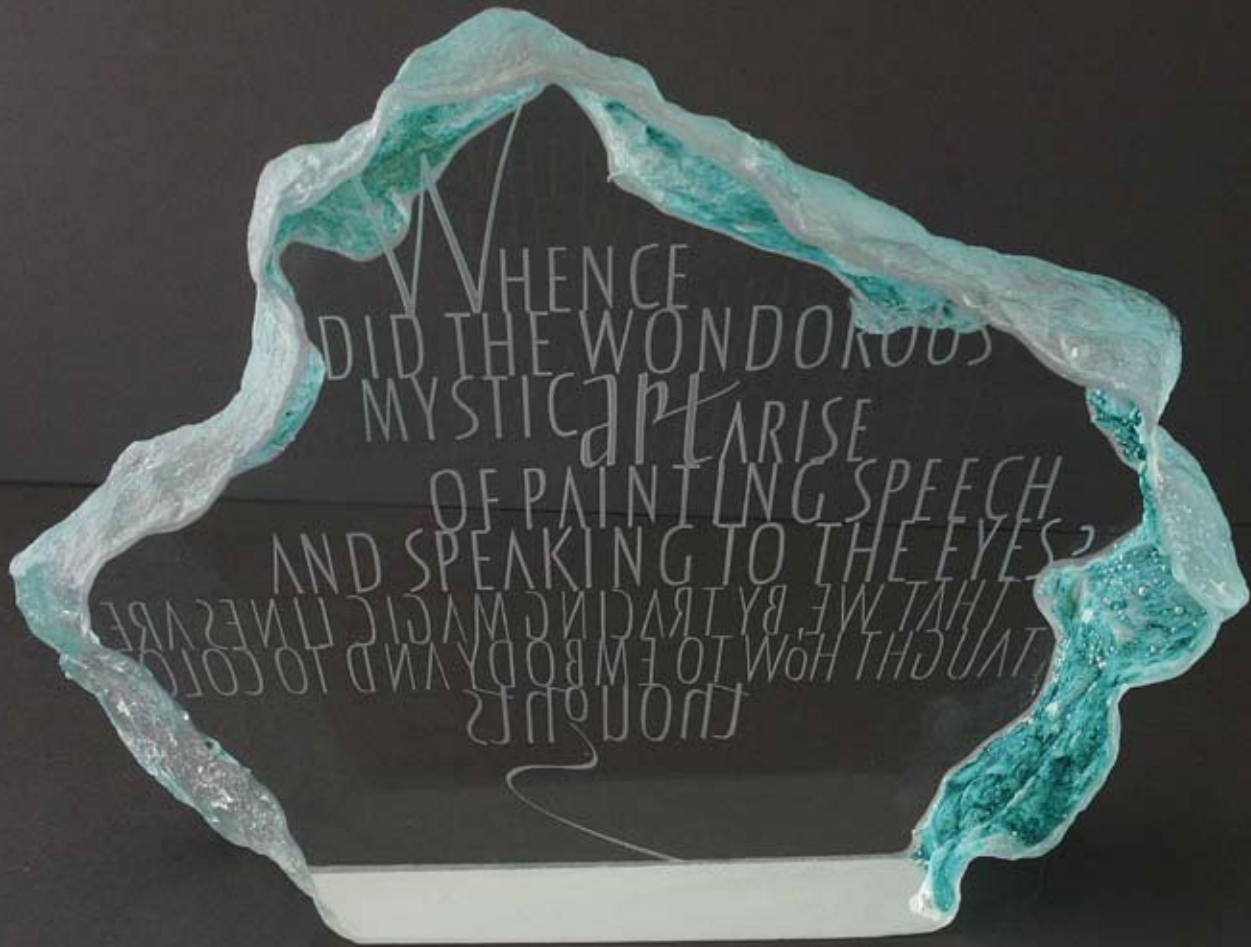
MAKING YOUR MARK Charmian Mocatta

Charmian Mocatta has been a member of the Guild of Glass Engravers since 1988. Her engraved letter forms on glass are in private collections worldwide and in museums in Great Britain including the Victoria & Albert Museum. Her book 'Lettering on Glass' (A & C. Black Ltd. 2001) 'reveals the thought processes and considerations needed before developing a design where letters predominate, the importance of working with light, and how the properties of the medium can be used to enhance letters'. As a calligrapher on glass she has been an inspiring teacher as well as a regular contributor to exhibitions, helping to make sure that the very British art of calligraphy continues to flourish.

Dan Klein Associates
Specialists in contemporary glass

MAKING YOUR MARK

Charmian Mocatta

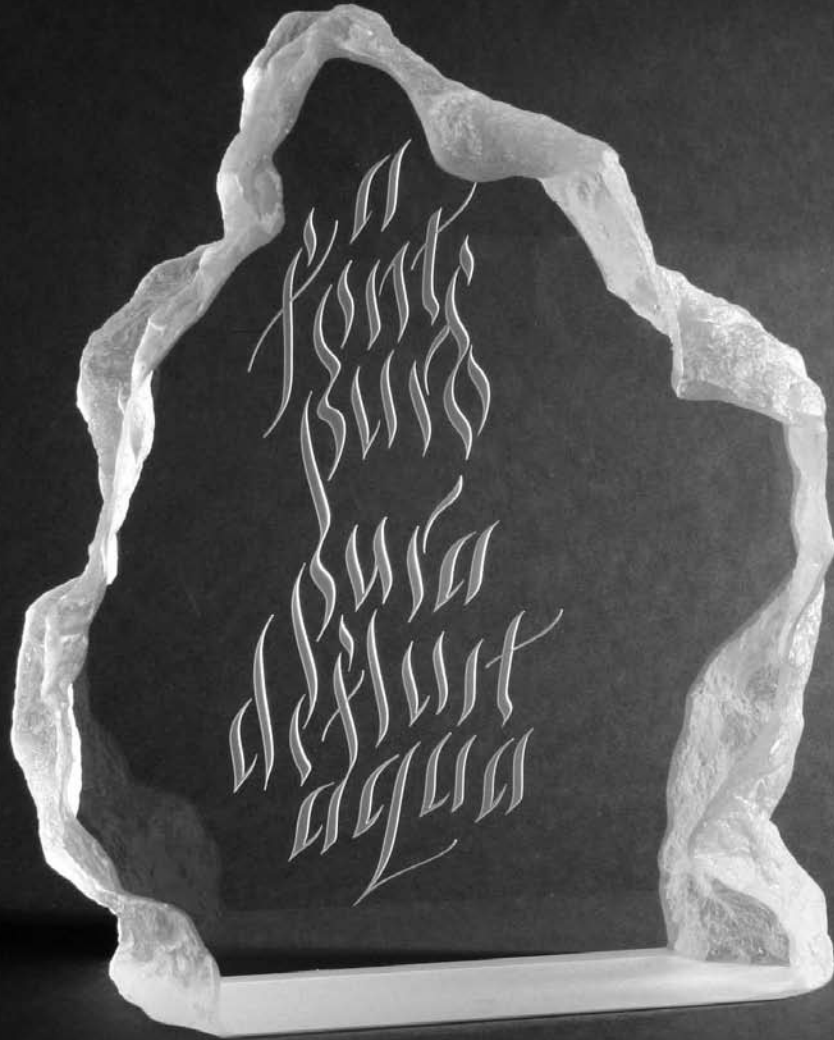


Charmian Mocatta - 'Catalyst' 2007 (words by William Massey)
(Kiln formed cast optical glass by Colin Reid)
Sandblasted through hand cut mask one side,
hand engraved on reverse using diamond burs
21cm. high
£2750

Dan Klein Associates
Specialists in contemporary glass

MAKING YOUR MARK

Charmian Mocatta



Charmian Mocatta -'A fonte puro pura defluit aqua' 2007
(Kiln formed cast optical glass by Colin Reid)
Sandblasted through hand cut mask
23.5cm high
SOLD

Dan Klein Associates
Specialists in contemporary glass

MAKING YOUR MARK Charmian Mocatta



Charmian Mocatta - 'Harmony in discord' 2007
Optical glass, part sandblasted through hand cut mask and
hand engraved using diamond burs
6 x 6 x 18cm high
£1400

Dan Klein Associates
Specialists in contemporary glass

MAKING YOUR MARK Charmian Mocatta



Charmian Mocatta - 'Counter Gnomes' 2006
Optical glass, part sandblasted through hand cut mask and
hand engraved using diamond burs.
5 x 5 x 18cm. high
£1400

Dan Klein Associates
Specialists in contemporary glass

MAKING YOUR MARK

Charmian Mocatta

Image currently unavailable

Charmian Mocatta - 'Counter Gnomes II' 2007
Optical glass cube with two conflicting quotations
6 x 6cm.
£950

Dan Klein Associates
Specialists in contemporary glass

MAKING YOUR MARK

Charmian Mocatta



Charmian Mocatta - 'Joie de vivre' 2007
(Glass bowl by Hadeland Glass Works, Norway)
Hand engraved using diamond burs
Ø23.5cm
SOLD

Dan Klein Associates
Specialists in contemporary glass